

# Palm Olympia

A real good estate



Aerial View

The aerial view incorporates  
Palm Olympia Phase 2  
and future developments

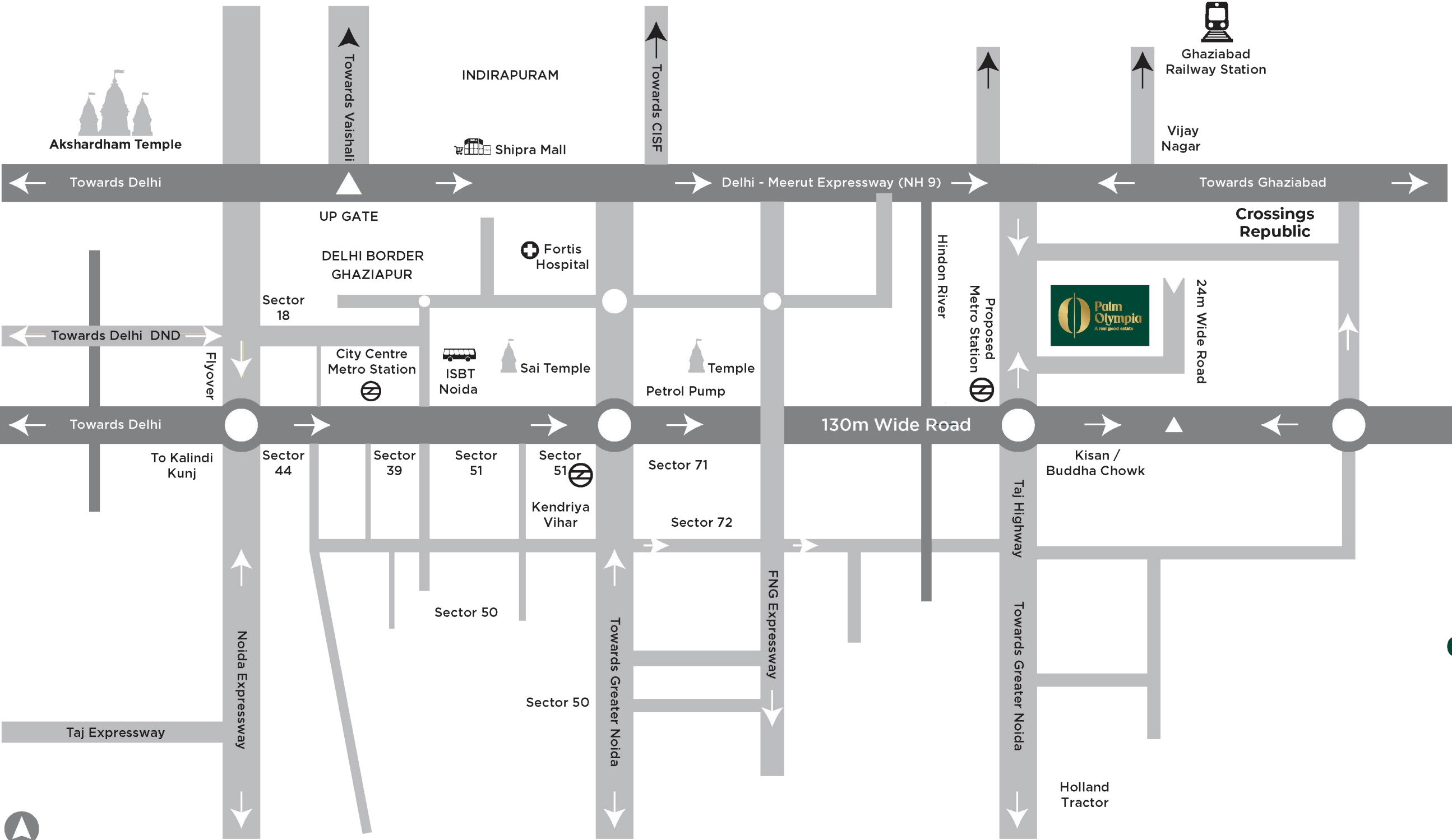






An  
**Address**  
To **Landmark**

# Location Map



Did you ever  
dream of an address  
that could turn into  
a landmark?

Here it is. Located  
amidst everything  
convenient  
and comfortable



20 min drive  
from Akshardham  
Temple

15 min drive from  
Noida City Centre

3 km from  
Delhi-Meerut  
Expressway  
(NH-9)

Situated  
on 60 m wide  
Taj Highway

1.3 km from  
Kisan Chowk

2 km from  
upcoming metro

Renowned  
hospitals  
within 5 km

Prominent schools/  
educational institutes  
in the vicinity

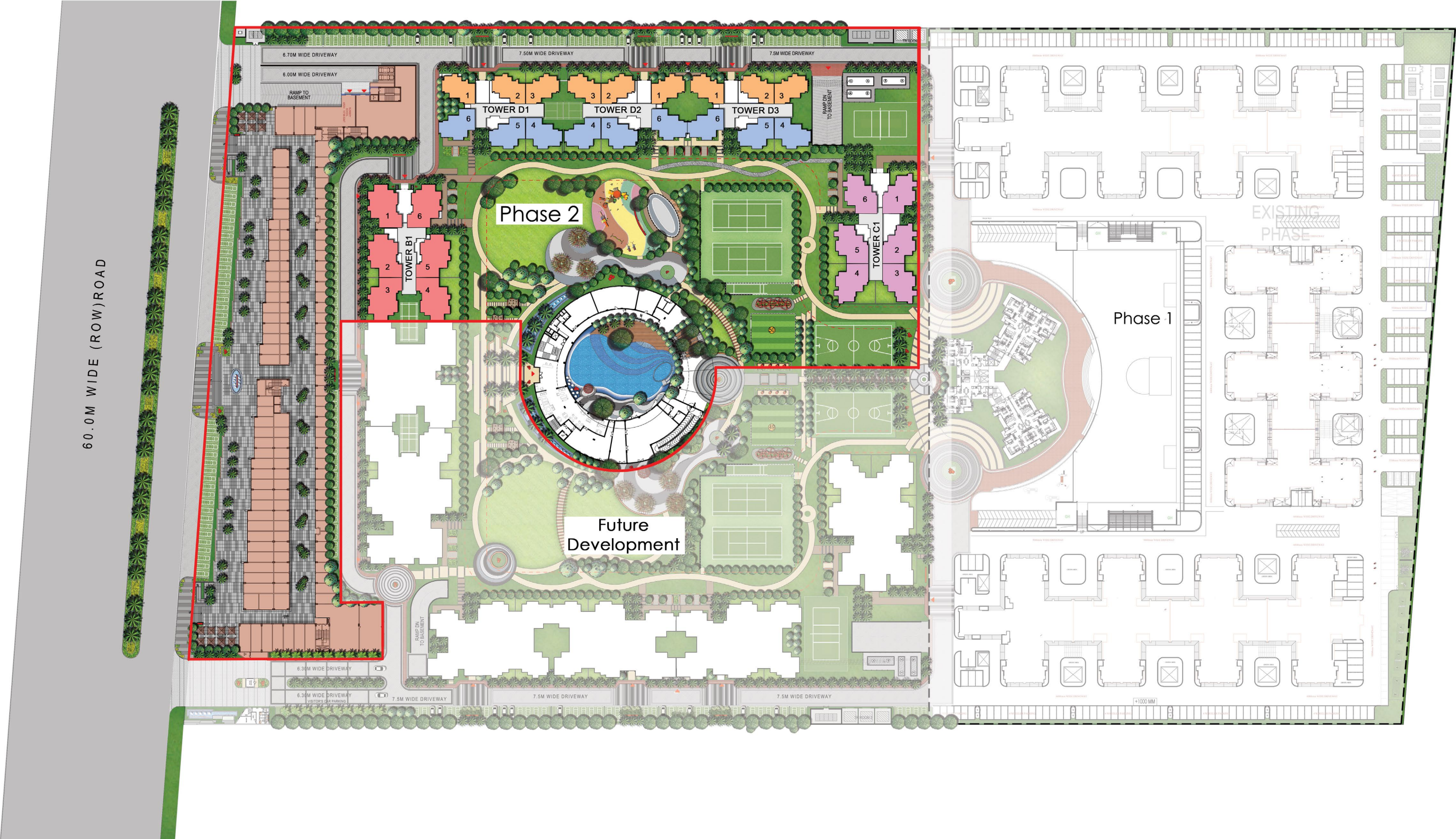
Palm Olympia is a jewel situated at Greater Noida West.  
The location is ideal for rapid commute to important business  
and leisure hubs of Delhi NCR.





# Master Plan Phase 2

UPRERAPRJ308567





# Master Plan Phase 2 and Future Development





Twilight View





# Club House Entrance







Club House



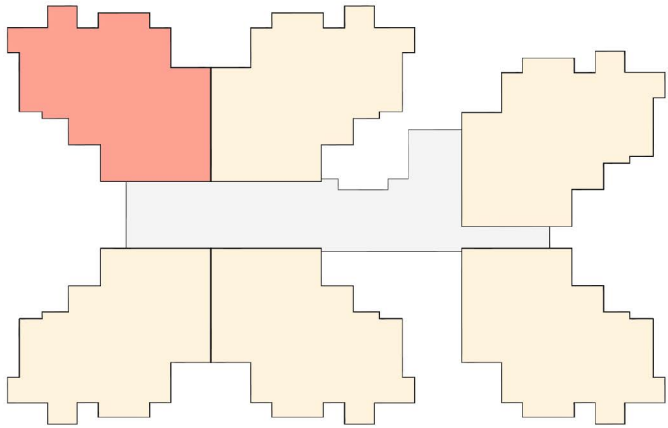
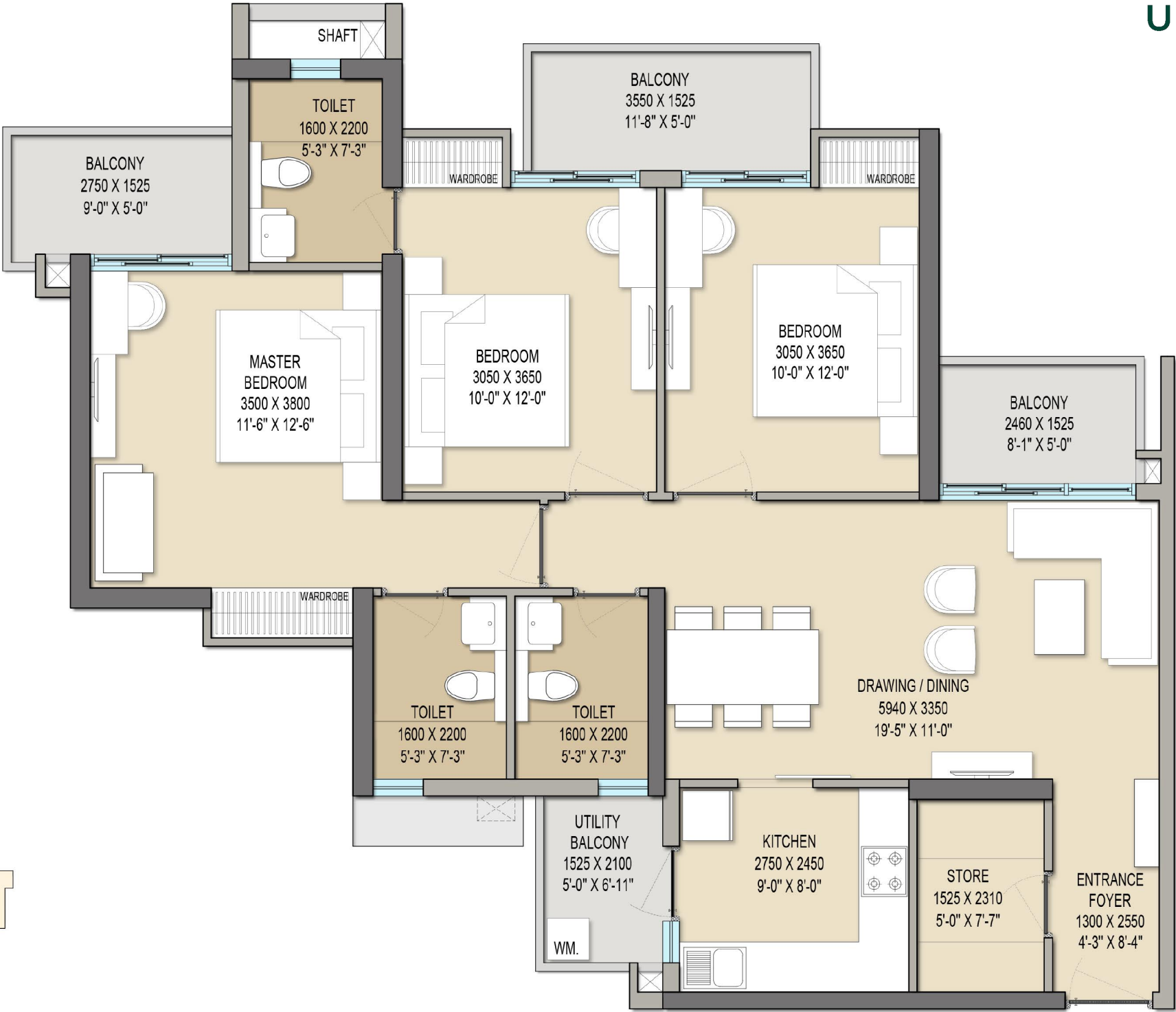
# TOWER PLANS





TOWER C  
UNIT PLAN

3BHK + 3T + UTILITY  
SALABLE AREA = 1608 Sqft.  
CARPET AREA = 967.51 Sqft.  
BALCONY AREA = 183.63 Sqft.  
BUILT-UP AREA = 1257.67 Sqft.



KEY PLAN



# TOWER D UNIT PLAN

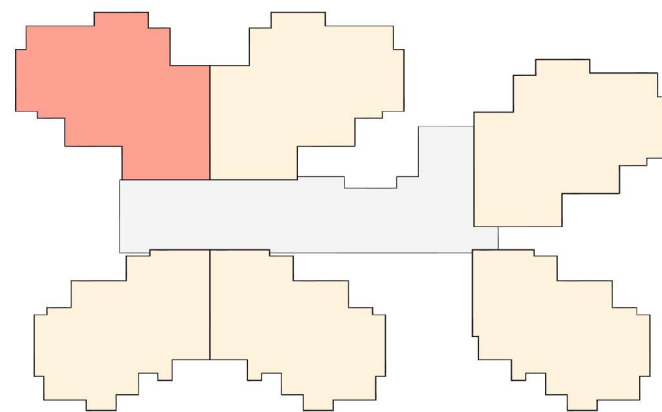
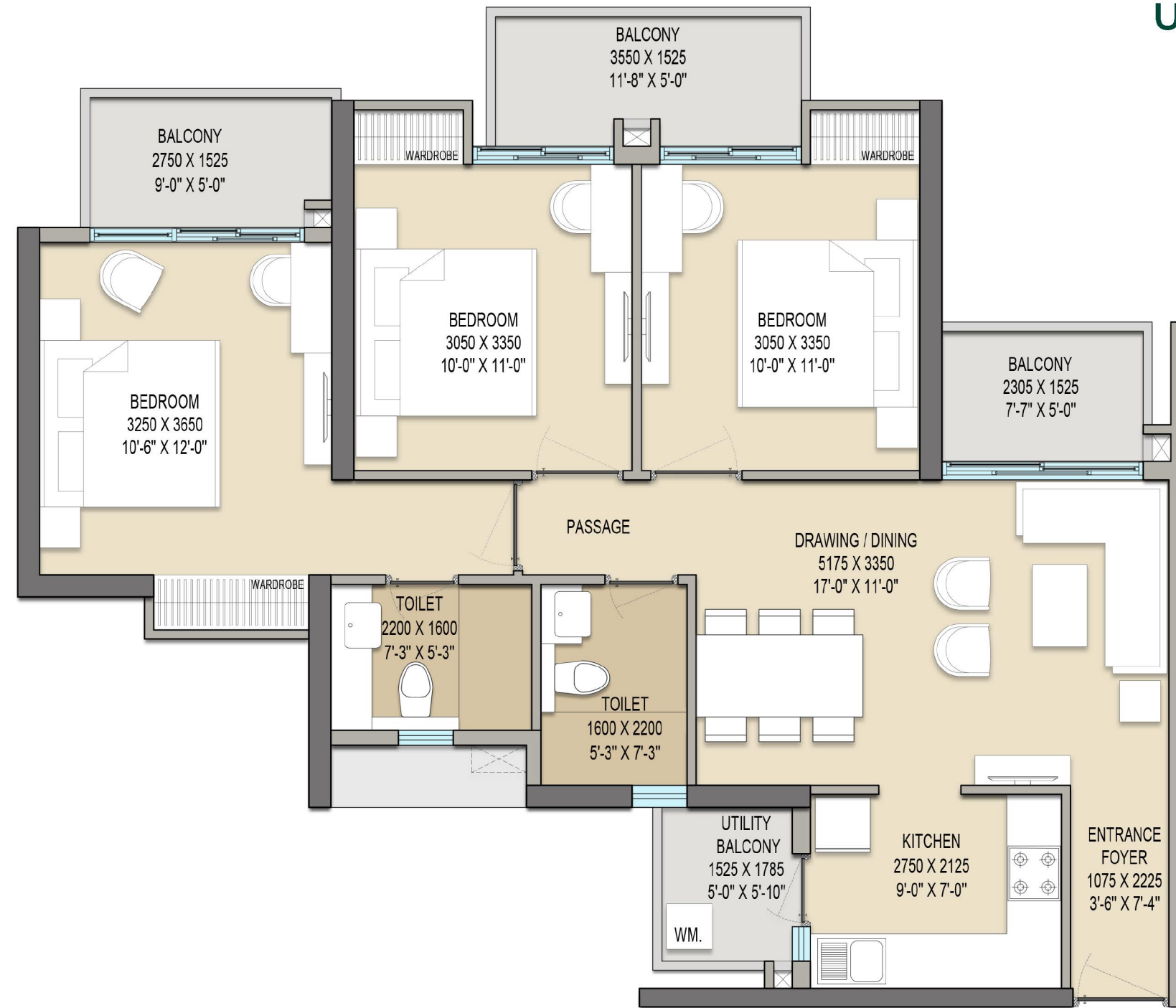
3BHK + 2T

SALABLE AREA = 1357 Sqft.

CARPET AREA = 800.41 Sqft.

BALCONY AREA = 170.16 Sqft.

BUILT-UP AREA = 1063.50 Sqft.



KEY PLAN



TOWER D  
UNIT PLAN

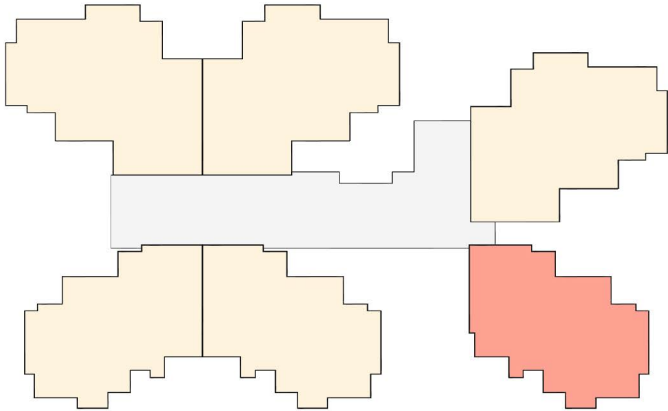
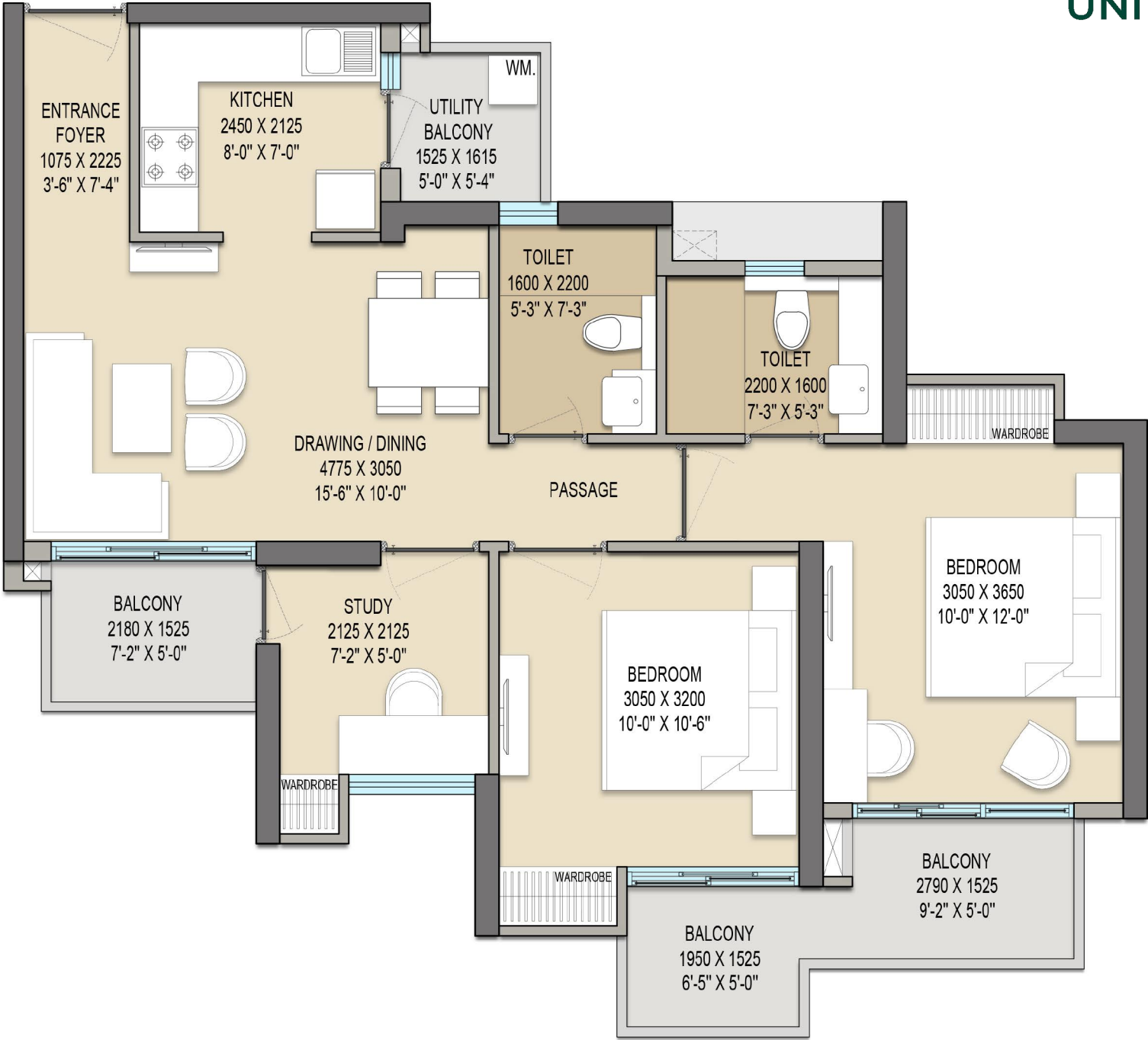
2BHK + 2T + STUDY

SALABLE AREA = 1182 Sqft.

CARPET AREA = 677.23 Sqft.

BALCONY AREA = 138.81 Sqft.

BUILT-UP AREA = 902.46 Sqft.



KEY PLAN



# Specifications

AREA	FLOORING	CEILING	WALL	INTERNAL DOORS	EXTERNAL DOOR / WINDOWS / RAILINGS	AIR CONDITIONING	SAFETY AND SECURITY	PLUMBING FIXTURES
ENTRANCE FOYER	Large Format Vitrified Tiles or equivalent (minimum size 800mm x800mm)	Ceiling painted	P.O.P punning/ Putty. Finish with Acrylic Emulsion paint.	Main Entrance Door 8' (2400 mm) High. Both Side Veener Polished flush Doors with hardwood door frame; main door to be provided with Digital Lock		-	Main door to be provided with Digital Lock and Video Door phone will be installed	-
DRAWING + DINING	Large Format Vitrified Tiles or equivalent (minimum size 800mm x 800mm)	Ceiling painted	P.O.P punning/ Putty. Finish with Acrylic Emulsion paint.	-	UPVC Door/ Windows as applicable	Ac points along with drain and copper piping shall be provided.		-
MASTER BEDROOM	Large Format Vitrified Tiles or equivalent (minimum size 800mm x 800mm)	Ceiling painted	P.O.P punning/ Putty. Finish with Acrylic Emulsion paint.		UPVC Door/ Windows as applicable	Ac points along with drain and copper piping shall be provided.		-
MASTER TOILET	Large Format Vitrified Tiles or equivalent (minimum size 600mm x 600mm)	Grid False Ceiling	Vitrified tiles up till ceiling height & Polished granite on Counter.	7' 5" (2250 mm) High laminated flush Doors	UPVC Door/ Windows as applicable			High quality, branded Chinaware and c.p. fittings, (Wall hung W.C., Diverter, Over the Counter W.B) CP Fittings Brand : Grohe/ Jaguar/Hindware or equiavalent Chinaware Brand - Kohler / Vitra or equivalent
ALL OTHER BEDROOMS	Large Format Vitrified Tiles or equivalent (minimum size 800mm x 800mm)	Ceiling painted	P.O.P punning/ Putty. Finish with Acrylic Emulsion paint.	7' 5" (2250 mm) High laminated flush Doors	UPVC Door / Windows as applicable	Ac points along with drain and copper piping shall be provided.		-
ATTACHED TOILET	Large Format Vitrified Tiles or equivalent (minimum size 600mm x 600mm)	Grid False Ceiling	Vitrified tiles up till ceiling height & Polished granite on Counter.	7' 5" (2250 mm) High laminated flush Doors	UPVC Door / Windows as applicable			High quality, branded Chinaware and c.p. fittings, (Wall hung W.C., Diverter, Below the Counter W.B) CP Fittings Brand : Grohe/ Jaguar/Hindware or equiavalent Chinaware Brand - Kohler / Vitra or equivalent
COMMON TOILET	Large Format Vitrified Tiles or equivalent (minimum size 600mm x 600mm)	Grid False Ceiling	Vitrified tiles up till ceiling height & Polished granite on Counter.	7' 5" (2250 mm) High laminated flush Doors	UPVC Door / Windows as applicable			High quality, branded Chinaware and c.p. fittings, (Wall hung W.C., Diverter, Below the Counter W.B) CP Fittings Brand : Grohe/ Jaguar/Hindware or equiavalent Chinaware Brand - Kohler / Vitra or equivalent
KITCHEN	Large Format Vitrified Tiles or equivalent (minimum size 800mm x 800mm)	Ceiling painted	Vitrified tile Above counter (below space for overhead cabinet)	-	UPVC Door / Windows as applicable			Stainless Steel Sink with drain board
BALCONY	Wood textured Vitrified/Ceramic Tiles	Ceiling painted	Exterior grade texture paint	-	Glass with SS Railing			
UTILITY BALCONY	Anti-skid Vitrified Tiles	Ceiling painted	Exterior grade texture paint	-	Solid Parapet Railing	-		Point for Washing Machine

1. **MAIN ENTRANCE LOBBBY:** Well designed, Grand entrance lobby with imported stone flooring
2. **STRUCTURE:** Monolithic structure casted in aluminum formwork technology (like Mivan)
3. **LIFT LOBBY:** Well designed, Aesthetic lobby with full body tile flooring

4. **LIFTS:** 3 Passenger Lifts & 1 Service Lift in all towers
5. **ELECTRICAL FITTINGS AND FIXTURES (APARTMENT):** Modular switches, copper wiring, concealed PVC conduits, Light & Power points. Provision for TV, Telephone, Intercom points in living room and all bedrooms. Provision for single wifi point only
6. **SPECIFICTATIONS:** For Tower C1,D2 & D3



Developer

**SAM INDIA**



# The mind

BEHIND THIS PRIZED POSSESSION

Sam India is a renowned leader in the construction industry, widely recognized for its exceptional commitment to timely project delivery and unwavering dedication. The company's passion for embracing cutting-edge technological advancements and innovative construction methodologies sets it apart from the competition. Currently, Sam India is undertaking the prestigious Housing for Members of Parliament in Delhi, as well as the depot for Mumbai Metro, among other endeavors. Its top notch quality ensures Sam India remains at the forefront of the ever-evolving construction industry, consistently delivering exceptional results.



Architect

Confluence  
Consultancy services

# The creator

## BEHIND THE MEDAL

Palm Olympia Phase 2 is a ground breaking project redefining housing in Greater Noida (West). A landmark project conceived from a fine collaboration of hard-work and imminent stakeholders involved in designing this beauty.

Confluence Consultancy Services is known to celebrate sustainability and aesthetics in every endeavour. Our goal has always been to create spaces that are inclusive, seamless and natural. Palm Olympia is a reflection of this philosophy and has been designed to seamlessly blend with nature and life.

We are committed to deliver world-class awe-inspiring designs.





**Site:** Plot No. GH - 02, Sector - 16 C, Greater Noida (West)

**Phase II:** UPRERA NO. UPRERAPRJ308567

**Disclaimer:** While every attempt has been made to ensure the accuracy of the plans shown, all measurements, positioning, fixtures, fitting and any other data shown are an approximate interpretation for illustrative purposes only and are not to scale. No responsibilities taken for any error, omission, mis-statement or use of data shown. The company reserves the right to make changes in the plans, specifications, dimensions and elevations without any prior notice. 1 sq. ft. = 0.0929 sq. mt. 1 sq. mt. = 10.764 sq. ft. 1ft. = 0.305 mt. and 1mt. = 3.281 ft.